

2015 Detroit Water Levels Preview

Erik Petersen

Operations Project Manager

Willamette Valley Project

Portland District

FLRCDL, Detroit, Oregon

April 15, 2015



US Army Corps of Engineers
BUILDING STRONG®

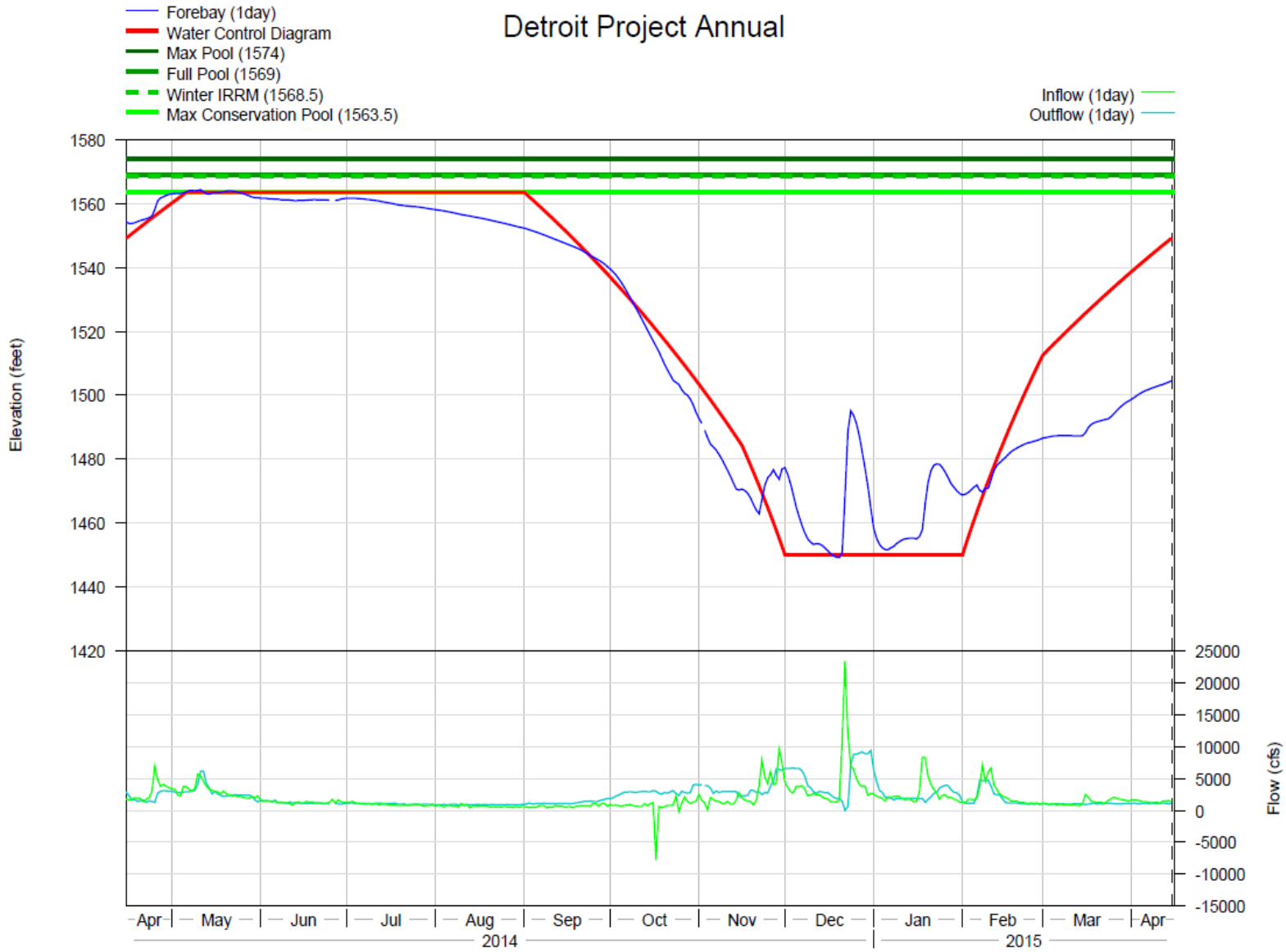


Overview

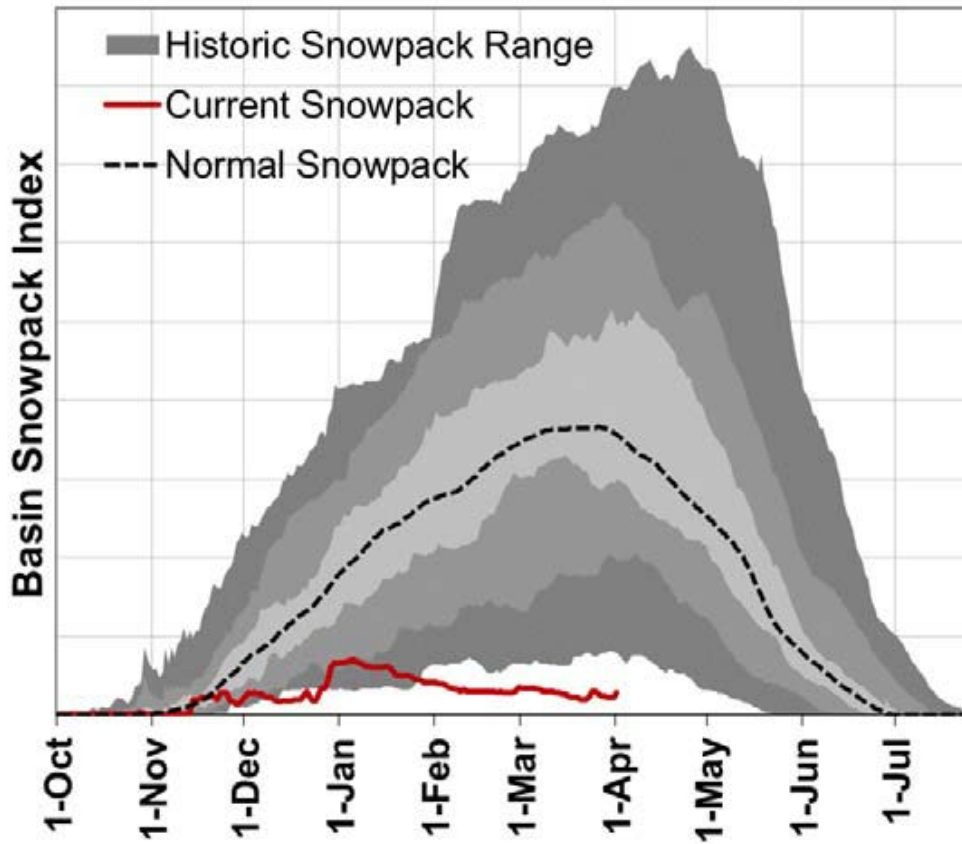
- Willamette system
- Detroit hydrograph
- Snowpack and precipitation data
- 2015 Detroit Reservoir water levels forecast
- Recent summer water levels
- Impacts of the Biological Opinion (ESA)
- Questions and answers



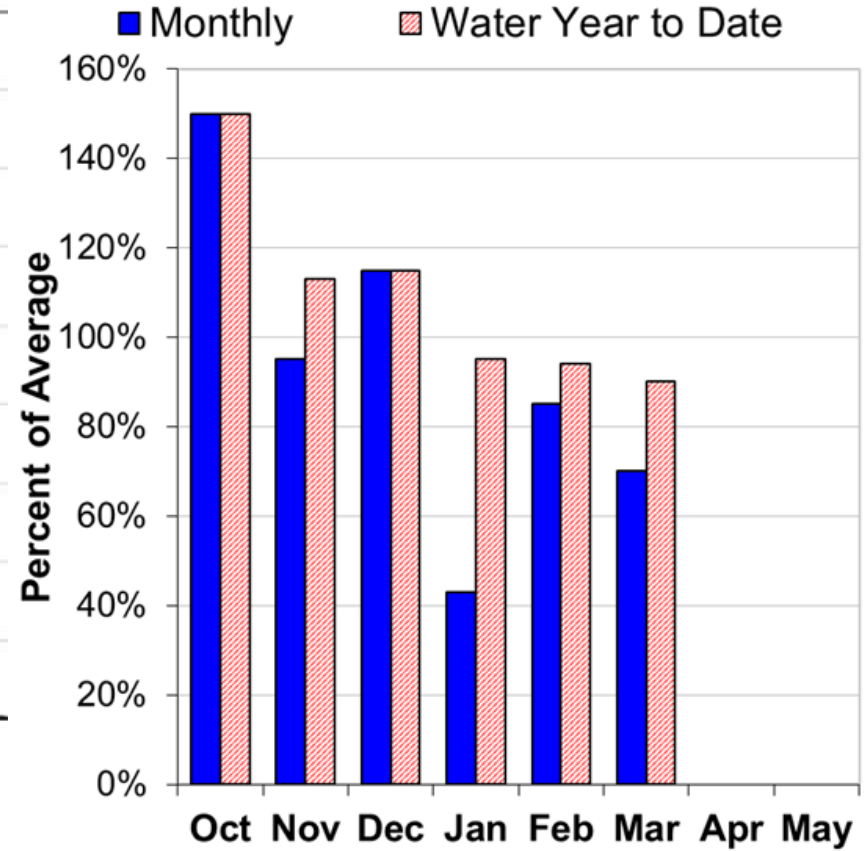
Detroit Project Annual



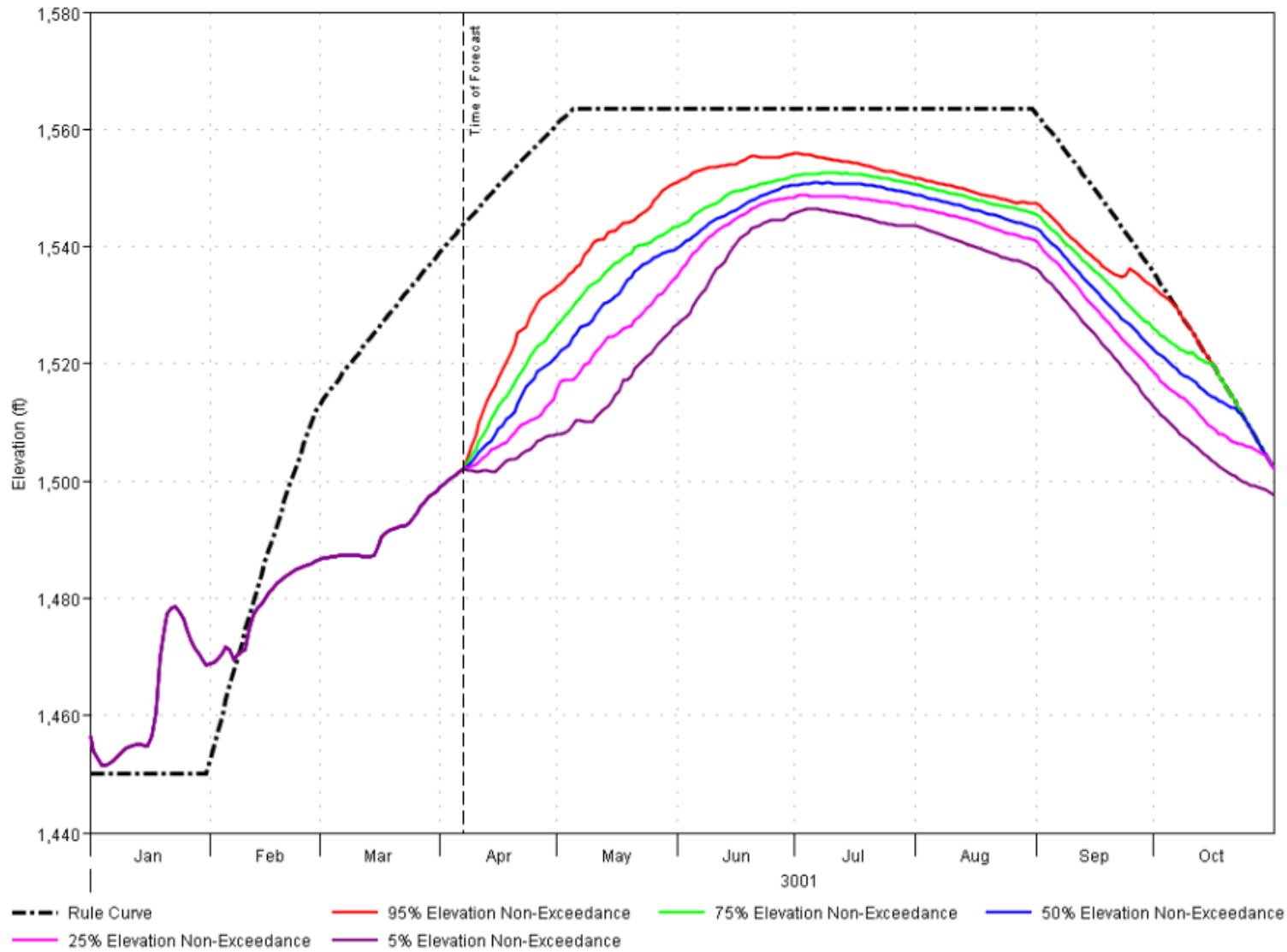
Mountain Snowpack



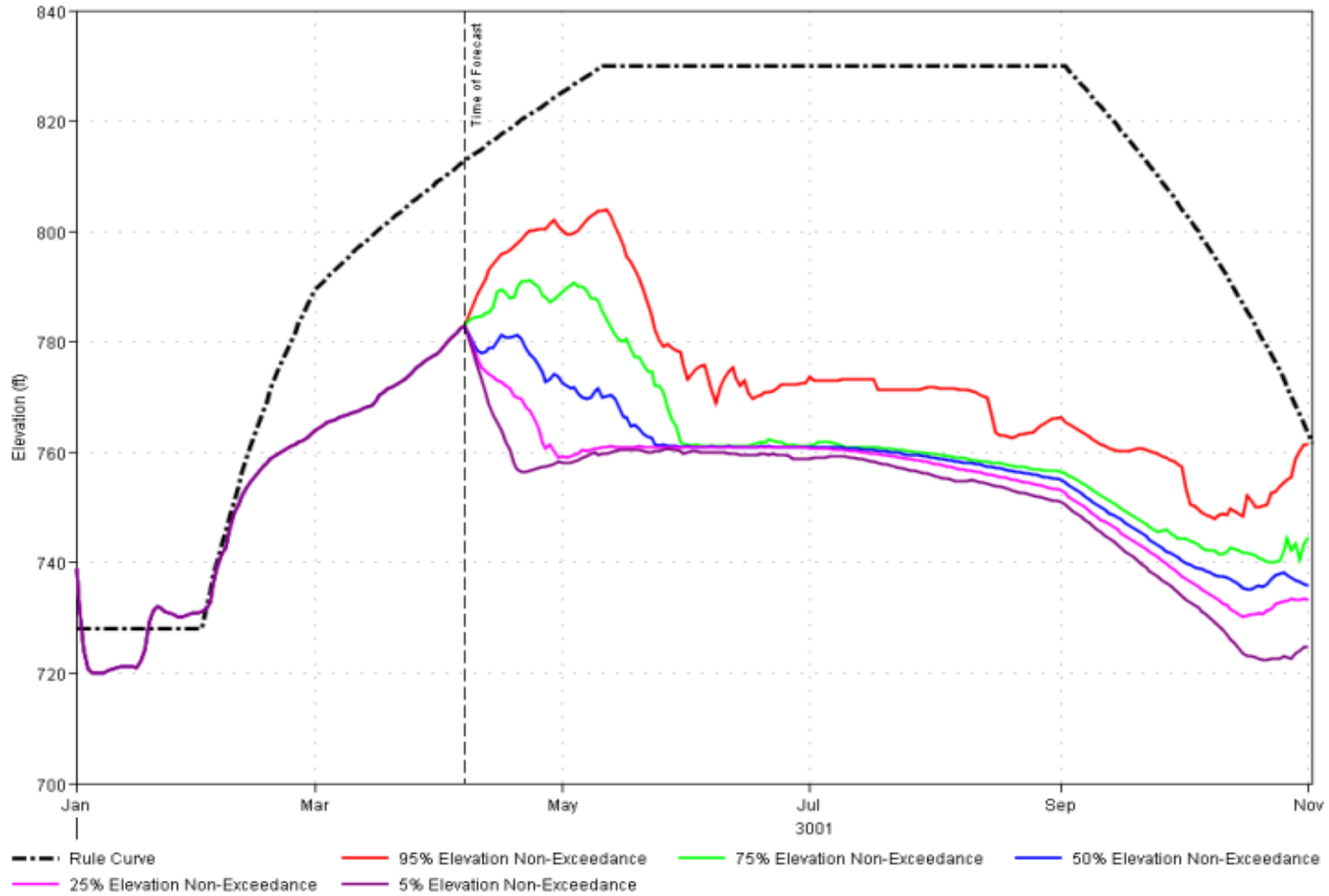
Basin Precipitation



DETROIT LAKE Elevation NRCS Apr 2015 Forecast

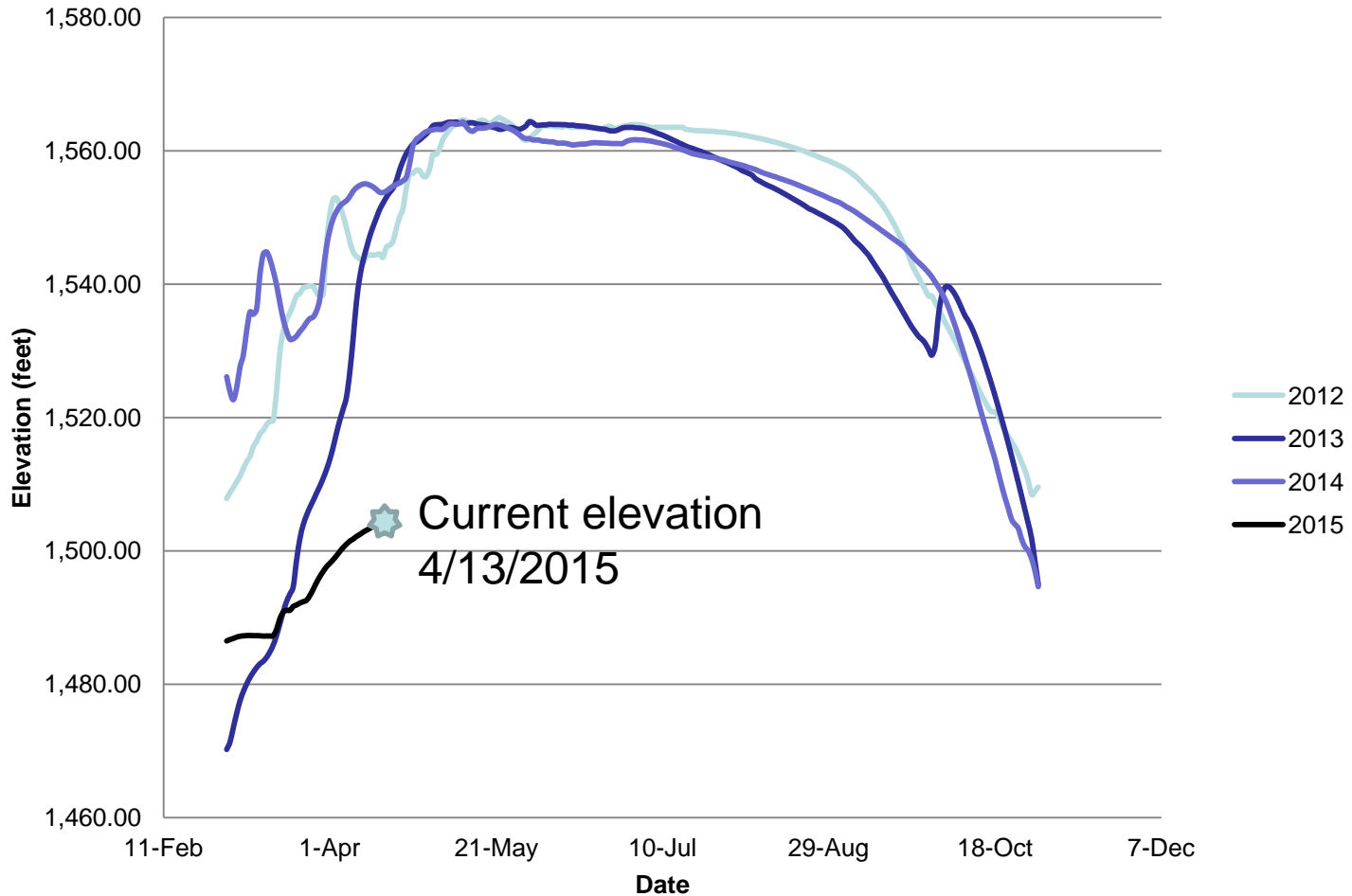


FALL CREEK LAKE Elevation NRCS Apr 2015 Forecast (Median)

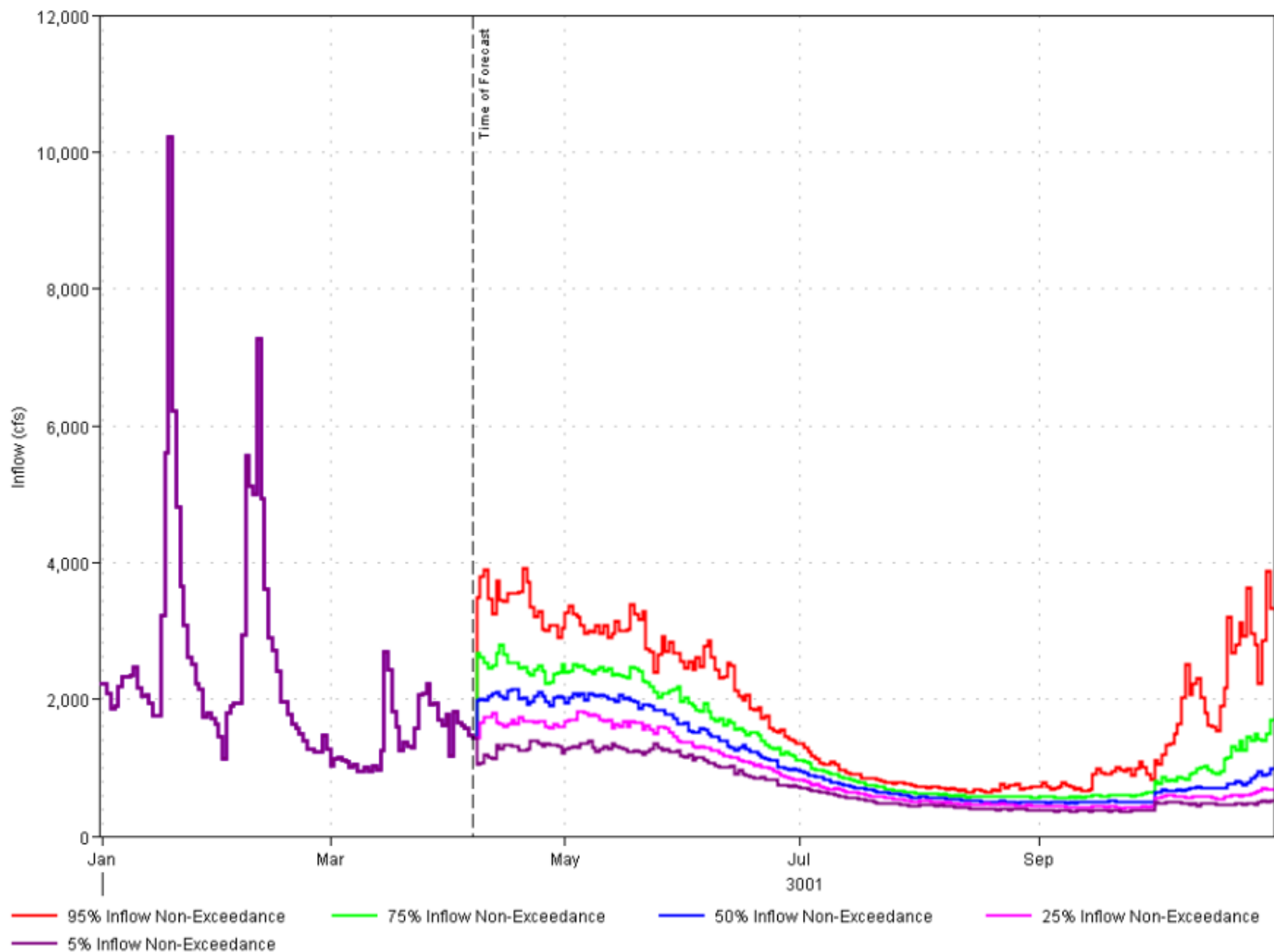


Summer Elevations 2012-2015

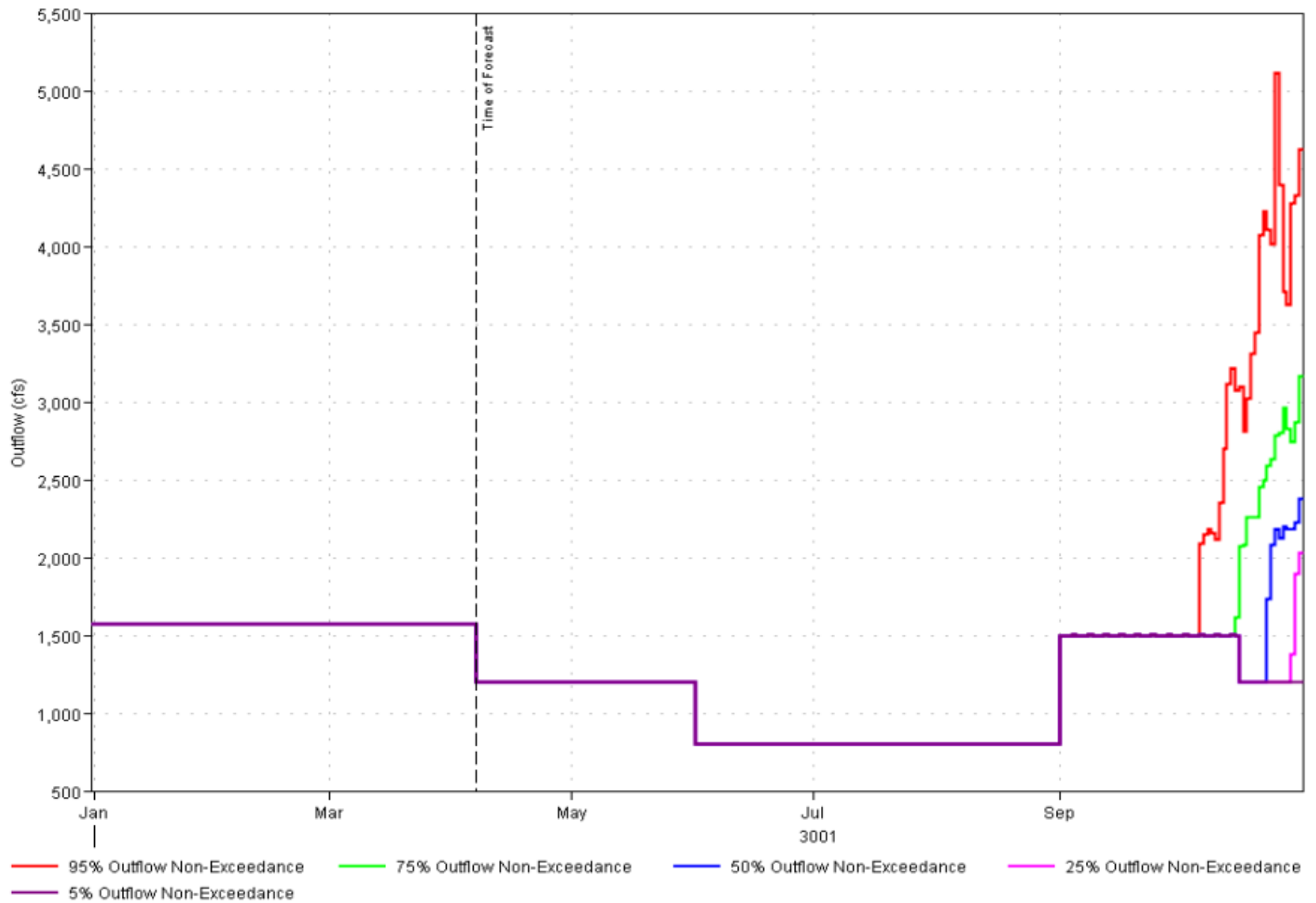
Detroit Observed Elevation, 2012-2015



DETROIT LAKE Inflow NRCS Apr 2015 Forecast



BIG CLIFF LAKE Outflow NRCS Apr 2015 Forecast



Impacts of the Biological Opinion

- Continue operational temperature control if elevation is $>1544'$
- Short term- spring & fall flows
- Long term- may construct a facility for temperature control and/or juvenile passage
 - ▶ Either operational or physical changes required



For more information:

- About the Corps: (Portland District web site)
www.nwp.usace.army.mil
- Reservoir Levels:
<http://www.nwd-wc.usace.army.mil/nwp/wm/>
- River Levels: (NW River Forecast Center)
<http://www.nwrfc.noaa.gov/>
- Portland District Public Affairs Office:
503-808-4510



Questions?



BUILDING STRONG®