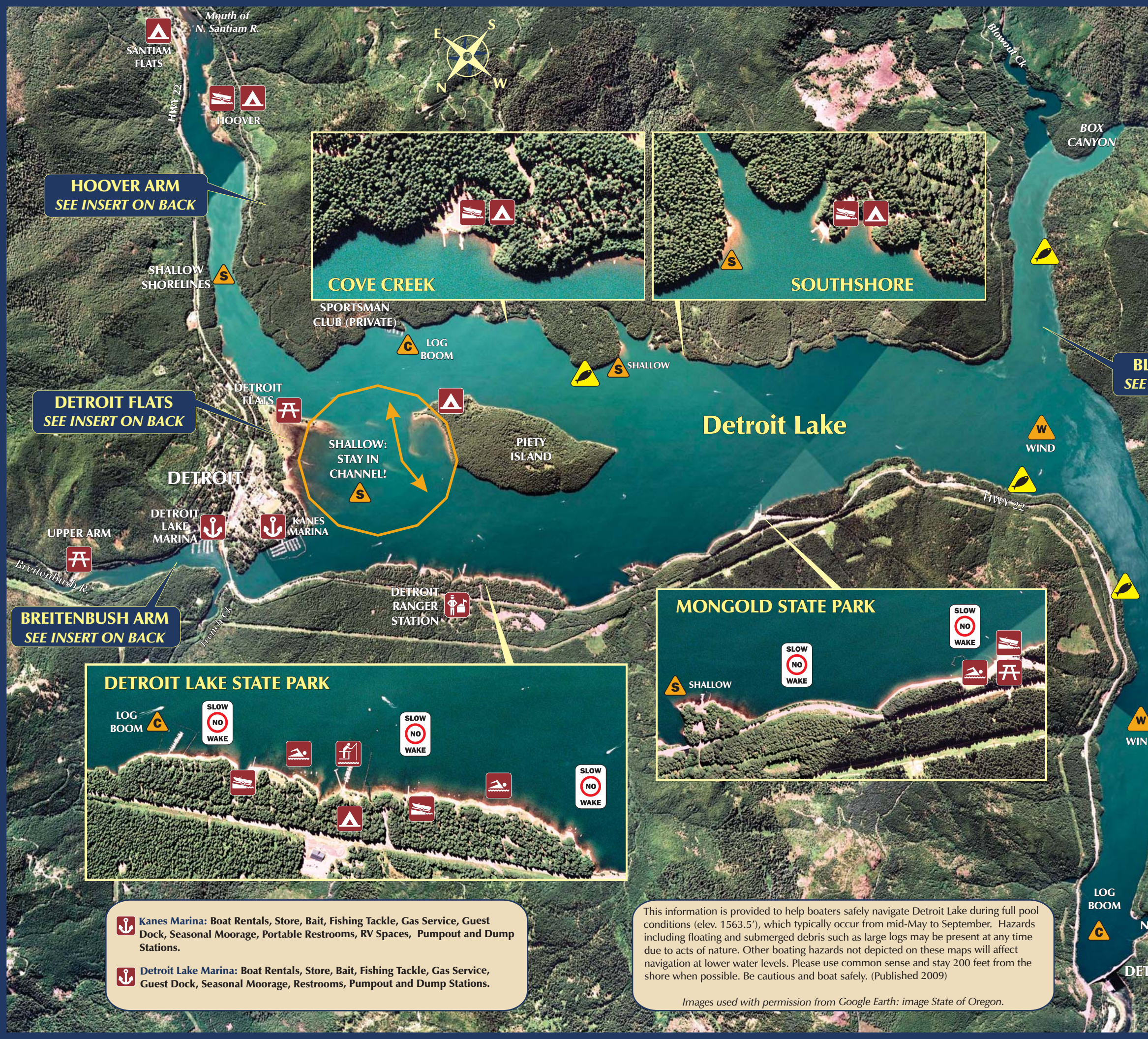


BOATING GUIDE

Detroit Lake, Oregon

Designed By:
 Federal Lakes Recreation Committee
 for Detroit Lake
 US Coast Guard's
 Recreational Boating Safety Fund
 Administered By:
 The Oregon State Marine Board
 "Let's Go Boating" Program
 In Cooperation With:
 USDA Forest Service -
 Willamette National Forest,
 Marion County Sheriff's Office,
 Oregon State Parks and Recreation
 Equal Opportunity Employers and Providers



HOOVER ARM
SEE INSERT ON BACK

DETROIT FLATS
SEE INSERT ON BACK

BREITENBUSH ARM
SEE INSERT ON BACK

BLOWOUT ARM
SEE INSERT ON BACK

CAUTION: Accessible during full pool.
Logs crisscross channel by falls.

CAUTION: Rock hazards. Small
turnaround areas beyond bridge.

DETROIT LAKE STATE PARK

MONGOLD STATE PARK

Kanes Marina: Boat Rentals, Store, Bait, Fishing Tackle, Gas Service, Guest Dock, Seasonal Moorage, Portable Restrooms, RV Spaces, Pumpout and Dump Stations.

Detroit Lake Marina: Boat Rentals, Store, Bait, Fishing Tackle, Gas Service, Guest Dock, Seasonal Moorage, Restrooms, Pumpout and Dump Stations.

This information is provided to help boaters safely navigate Detroit Lake during full pool conditions (elev. 1563.5'), which typically occur from mid-May to September. Hazards including floating and submerged debris such as large logs may be present at any time due to acts of nature. Other boating hazards not depicted on these maps will affect navigation at lower water levels. Please use common sense and stay 200 feet from the shore when possible. Be cautious and boat safely. (Published 2009)

Images used with permission from Google Earth: image State of Oregon.

The Federal Lakes Recreation Committee for Detroit Lake (FLRCDL) was founded to maintain sustainable recreation and economic stability in the Detroit Lake area. For more information or to check daily water levels, please visit:
<http://www.detroitlakeoregonrecreation.com>

IN CASE OF EMERGENCY - DIAL 911
 For non-emergencies, contact:
 Marion County Sheriff and
 Marine Patrol: (503) 588-5032
 Linn County Sheriff: (800) 884-3911
 Oregon State Police: (503) 375-3555



MAP LEGEND	BOATING REGULATION REMINDERS											BOATER WARNINGS		
	FEE SITES	CAMPSITES	PICNIC SITES	RESTROOMS	MARINA /STORE	BOAT GAS	BOAT RAMP	FISHING PIER	SWIM AREA	WHEELCHAIR ACCESSIBLE			RED BUOY: Marks right side of channel	GREEN BUOY: Marks left side of channel
SITE NAME														
MONGOLD STATE PARK	\$													
DETOIT LAKE STATE PARK	\$													
UPPER ARM DAY USE AREA	\$													
DETOIT FLATS DAY USE AREA														
SANTIAM FLATS CAMPGROUND	\$													
HOOVER CAMPGROUND	\$													
COVE CREEK CAMPGROUND	\$													
SOUTH SHORE CAMPGROUND	\$													
PIETY ISLAND CAMPGROUND	\$													
KANE'S MARINA														
DETOIT LAKE MARINA														

BOATING REGULATION REMINDERS

- No wake within 200' of shoreline, docks, log booms, and fishing piers.
- Distance of boats must be at least 300' behind skier and 100' alongside skier, and 100' from any anchored or non-motorized vessel.
- Children 12 and younger must wear a life jacket at all times while underway and being towed.
- You must have a Type I, II or III life jacket for each person plus a throwable flotation device.
- Mark sure your fire extinguisher is in good working order.
- Display proper lighting while boating between sunset and sunrise.
- Run blower 4 minutes before ignition.
- Boaters must use a red or orange skier flag when a person is down in the water. There must be another person aboard as a lookout.
- Boat Safe. Boat Sober. Even one drink can impair your judgment.
- Fishing on Detroit Lake is open year round but must be in still water.

Source: Oregon Boaters Handbook 2009-2010

BOATER WARNINGS

- RED BUOY: Marks right side of channel
- GREEN BUOY: Marks left side of channel
- SWIM AREA: No wake within 200'
- SLOW "NO WAKE": Usually requires idle speed or less than 5 MPH
- NO MOTOR BOATS: Beyond buoys near Upper Arm
- SHALLOW HAZARDS: Sand bars, stumps, rocks, downed trees
- RESTRICTIONS: Height limit, Narrow space
- CAUTION: Surface log booms, floating hazards
- WIND WARNING: Small craft advisory
- FISH STRUCTURE: Logs anchored 40" under full pool level

